

TAPPING ARMS



ROSCAMAT®

Electric Machines & Modules

Series 6000 & Series 9001

SERIES 6000 ELECTRIC MACHINES

REACH 44" HEIGHT 26"



Articulating Tapping Arms

- #0 - 1 3/8" (M1,6 - 1") Capacity
- 75 RPM to 900 RPM Modular System
- Brushless TSV Type
- Single-Phase 220 V.
- Variable Speed Control
- Right & Left-Hand Rotation
- Automatic Tool Lubrication

Model 6000 *Standard Unit*
EDP R60000A

Model 6000-C63 *For Vertical & Horizontal Tapping*
EDP R64000A



SERIES 9001 ELECTRIC MACHINES

REACH 48" HEIGHT 32"



Programmable Articulating Tapping Arm

- #0 - 1 3/8" (M1.6-M33) Capacity
- 40 RPM to 900 RPM Modular System
- Brushless TSV Type
- Single-Phase 220 V.
- Programmable Depth Control
- Variable Speed Control
- Right & Left Hand Rotation
- Thread Type & Pitch Selection
- Automatic Tool Lubrication

Model 9001-NC *Standard Unit*
EDP R91000A

Model 9001-NC-C33 *For Vertical & Horizontal Tapping*
EDP R91001A



Interchangeable Gearbox Module for Electronic Models 6000 & 9001



From a single motor, 6 different speed (RPM) modules are available to provide the right torque for the right tap.

EDP	Description	Capacity	Adapter Size
R90510A	40rpm Module	1/2" - 1 3/8" (M12-M33)*	#3
R90521A	75rpm Module	1/2" - 1 3/8" (M12-M33)	#3
R90520A	75rpm Module	5/16" - 7/8" (M8-M22)	#2
R90530A	140rpm Module	5/16" - 3/4" (M8-M22)	#2
R90540A	320rpm Module	0" - 9/16" (M1.6-M14)	#1
R90550A	500rpm Module	0" - 1/2" (M1.6-M12)	#1
R90560A	900rpm Module	0" - 5/16" (M1.6-M8)	#1

* For Model 9001 Only

SERIES 200

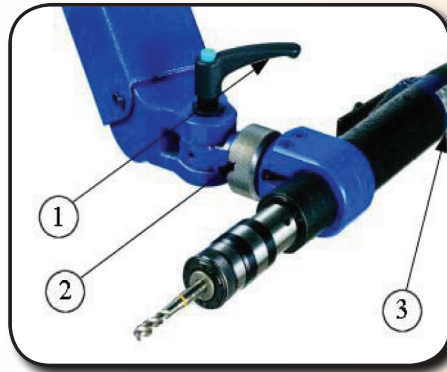
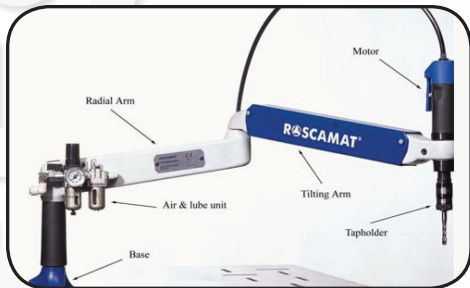
The Series 200 standard machine consists of a radial arm to a tilting arm that is balanced by a pneumatic damper. The tilting arm fixes to the head member and the pneumatic motor both of them moving perpendicularly to the work piece. As a result of these combinations results in a toroidal movement in the work area.

The TSVII Pneumatic Motor is available in 2 speeds 350 or 750 RPM. The swivel motor mount option offers the ability to tap in a Vertical and Horizontal position. Add C13 to the standard part number to get this option.

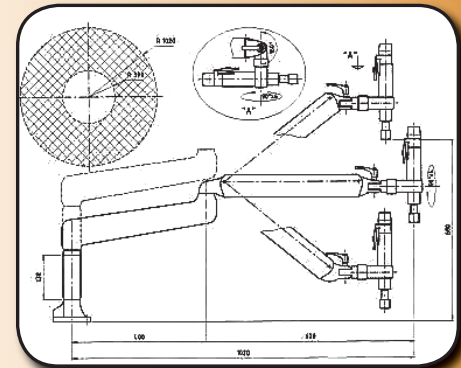
The tap holder is mounted directly to the pneumatic motor with a quick change system that utilizes common SCM tap adapter system. This system offers a Rigid Adapters for through holes and easy to machine materials and a Torque Control Adapter that offers added safety for blind holes and difficult to machine materials. The SCM tap adapter system also offers a 5 second quick change method that reduces tool change time and increases the productivity in all threading operations. SCM tap adapters can be found on pages 26 & 27.



REACH 37" HEIGHT 26"



Horizontal Tapping



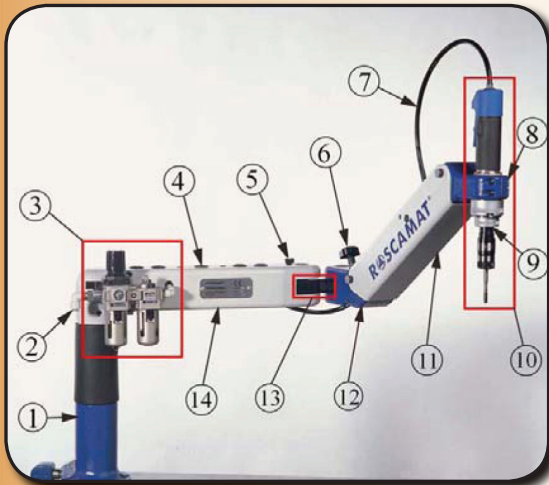
MODEL 200-350 <i>EDP R20001A</i>	MODEL 200-750 <i>EDP R20002A</i>	MODEL 200 C13-350 <i>EDP R20003A</i>	MODEL 200 C13-750 <i>EDP R20004A</i>
<ul style="list-style-type: none"> ● 350 RPM ● # 0 - ⁹/₁₆ " ● M2 - M14 ● Size 1 	<ul style="list-style-type: none"> ● 750 RPM ● # 0 - ³/₈ " ● M2 - M10 ● Size 1 	<ul style="list-style-type: none"> ● 350 RPM ● # 0 - ⁹/₁₆ " ● M2 - M14 ● Size 1 	<ul style="list-style-type: none"> ● 750 RPM ● # 0 - ³/₈ " ● M2 - M10 ● Size 1

VERTICAL TAPPING

VERTICAL & HORIZONTAL TAPPING

Pneumatic Machines
Series 400 & RPM Modules

REACH 43" HEIGHT 27"



SERIES 400

- | | |
|--------------------------|---------------------|
| 1. Machine base plate | 8. Headmember |
| 2. Intake Connection | 9. Module |
| 3. Air Group FRL | 10. Motor pneumatic |
| 4. Tapholder nest | 11. Tilting arm |
| 5. Brake Handle | 12. Cross Unit |
| 6. Damper reg. handwheel | 13. Union |
| 7. Intake pipe | 14. Radial arm |

#0 - 7/8" (M2-M22) Capacity • 90 RPM to 2100 RPM Modular System
• TS-VIII Motor Size 1 & 2 Tap Adapters

MODEL 400
EDP R40000A

MODEL 400-E
EDP R41000A

MODEL 400-C43
EDP R44000A

MODEL 400-C43-E
EDP R45000A

Standard Unit

Comes with Tool Lubricator

For Vertical & Horizontal Tapping

For Vertical & Horizontal Tapping with Tool Lubricator



Interchangeable Gearbox Module for Pneumatic Models 400, 500 & 500RH

DEPTH STOP CONTROL

Machine Series 400 & 500 are available with an automatic depth stop control feature. This attachment provides automatic reversing when the tap reaches the pre-set depth. The attachment is assembled with the Depth Stop Control at the factory. The part number below includes the complete tapping arm with the Depth Stop Control attachment included.

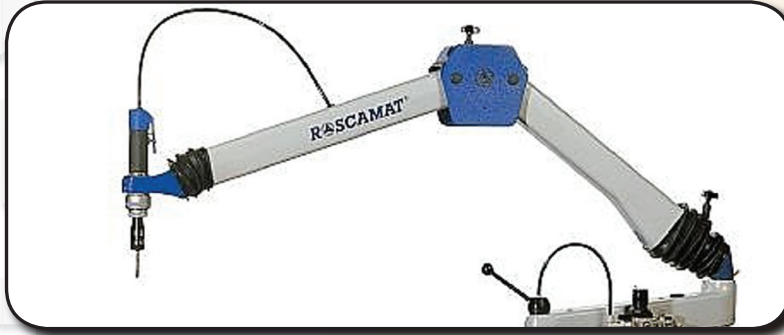
EDP	Model
R40016A	Model 400-P
R41016A	Model 400-P E
R44016A	Model 400-P-C43
R45016A	Model 400-P-C43-E
R50016A	Model 500-P
R51016A	Model 500-P RH
R52016A	Model 500-P E
R53016A	Model 500-P RH-E
R54016A	Model 500-P C26-N
R55016A	Model 500-P C26-N-E



Tolerance: +/- .020" (.5mm)

EDP	Description	Capacity	Adapter Size
R40510A	90rpm Module	5/16" - 7/8" (M8-M22)	#2
R40520A	170rpm Module	5/16" - 5/8" (M8-M22)	#2
R40530A	300rpm Module	0" - 9/16" (M1.6-M14)	#1
R40540A	550rpm Module	0" - 1/2" (M1.6-M12)	#1
R40550A	750rpm Module	0" - 3/8" (M1.6-M10)	#1
R40560A	1050rpm Module	0" - 5/16" (M1.6-M8)	#1
R40570A	2100rpm Module, Drill up to 5/16", B16 Mount		

SERIES 500



REACH 83" HEIGHT 44"

#0 - 7/8" (M2-M22) Capacity • 90 RPM to 2100 RPM Modular System
• TS-VIII Motor Size 1 & 2 Tap Adapters

MODEL 500 <i>EDP R50000A</i>	MODEL 500-E <i>EDP R52000A</i>	MODEL 500-C26N <i>EDP R54000A</i>	MODEL 500-C26N-E <i>EDP R55000A</i>
<i>Standard Unit</i>	<i>Comes with Tool Lubricator</i>	<i>For Vertical & Horizontal Tapping</i>	<i>For Vertical & Horizontal Tapping with Tool Lubricator</i>

SERIES 500RH

#0 - 7/8" (M2-M22) Capacity • 90 RPM to 2100 RPM Modular System • TS-VIII Motor Size 1 & 2 Tap Adapters

Multiposition Head Tap in any position

MODEL 500-RH <i>EDP R51000A</i>	MODEL 500-RH-E <i>EDP R53000A</i>
<i>Standard Unit</i>	<i>Comes with Tool Lubricator</i>



REACH 86" HEIGHT 44"

TAPPING ARMS



ROSCAMAT®

Accessories

Tables, Clamps, Columns & Lifters

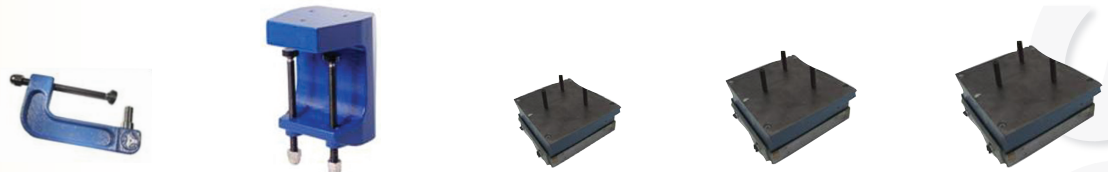
TABLES



METRIC	500 x 500 x 900 mm	700 x 700 x 850 mm	850 x 850 x 850 mm	1100 x 850 x 850 mm
INCH	19 11/16" x 19 11/16" x 35 7/16"	27 9/16" x 27 9/16" x 33 7/16"	33 7/16" x 33 7/16" x 33 7/16"	43 5/16" x 33 7/16" x 33 7/16"
R 200	•	•	•	•
R 400	•		•	•
R 500/500RH			•	•
R 6000			•	•
R 9001			•	•
EDP	RA0003A	RA0004A	RA0005A	RA0006A

All tables come standard with wheels and brakes

CLAMPS



	Small clamp	Big clamp	Magnetic Support		
			5 7/8" x 5 7/8"	7 7/8"	9 13/16"
R 200	•	•	•		
R 400	•	•		•	
R 500/500RH		•			•
R 6000	•	•			•
R 9001		•			•
EDP	RA0001A	RA0002A	RA0014A	RA0015A	RA0016A

COLUMNS



350 x 350 x 750 mm 13 3/4" x 13 3/4" x 29 1/2"	
R 200	•
R 400	•
R 500/500RH	•
R 6000	•
R 9001	•
EDP RA0010A	

LIFTERS



	Pneumatic	Mechanical
	550 mm	500 mm
stroke	21 5/8"	19 11/16"
R 200	•	•
R 400	•	•
R 500/500RH	•	•
R 6000	•	•
R 9001	•	
EDP RA0012A	EDP RA0013A	

Die Holder STANDARD LENGTH

EDP	SIZE
RA0017A	SIZE 1 - #10 - 1/2"
RA0018A	SIZE 2 - 5/8 - 13/16"



Tap Adapter Extension

OVERALL LENGTH 3.150" (80 MM)

EDP	SIZE
RA0020A	SIZE 1 - #10 - 9/16"



Tap Reduction Adapter REDUCTION CUP

EDP	SIZE
RA0022A	1 - 0
RA0021A	2 - 1
RA0024A	3 - 1
RA0023A	3 - 2



Keyed Drill Chuck CY-10 B-16 MOUNT

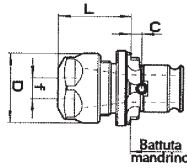
EDP	CAPACITY
L40112A	1/16" - 3/8"



LLAMBRICHUSA

ER Collet Chuck ADAPTERS

EDP	SIZE
11750A	1 - ER16
11751A	2 - ER25



Keyless Drill Chuck CKX-13 B-16 MOUNT

EDP	CAPACITY
L40219A	1/16" - 1/2"



LLAMBRICHUSA

TAP ADAPTERS



COMPLETE OFFERING OF RIGID & TORQUE CONTROL TAP ADAPTERS SEE PAGES 26 & 27

Tap Size			Size 1				Size 2			
			Rigid		Torque Control		Rigid		Torque Control	
ANSI	ISO	STI	Part #	EDP	Part #	EDP	Part #	EDP	Part #	EDP
#0-6	M1.6-M3.5	2,3,4	19/11 4036	11600B	19/1 4036	11800B				
#8	M4	5	19/11 4041	11602B	19/1 4041	11801B				
#10	M5	6	19/11 4048	11604B	19/1 4048	11802B				
#12		8	19/11 4054	11605B	19/1 4054	11803B				
1/4	M6	10	19/11 4063	11606B	19/1 4063	11804B				
5/16	M8	12, 1/4	19/11 4079	11607B	19/1 4079	11805B	31/12 4079	11614B	31/2 4079	11811B
3/8	M10	5/16	19/11 4095	11608B	19/1 4095	11806B	31/12 4095	11615B	31/2 4095	11812B
7/16	M11		19/11 4111	11611B	19/1 4111	11807B	31/12 4111	11616B	31/2 4111	11813B
1/2	M12	3/8	19/11 4127	11612B	19/1 4127	11808B	31/12 4127	11617B	31/2 4127	11814B
9/16	M14	7/16	19/11 4142	11613B	19/1 4142	11809B	31/12 4142	11618B	31/2 4142	11815B
5/8	M16	1/2					31/12 4158	11619B	31/2 4158	11816B
11/16	M18	9/16					31/12 4174	11620B	31/2 4174	11817B
3/4							31/12 4190	11621B	31/2 4190	11818B
13/16	M20						31/12 4206	11622B	31/2 4206	11819B
7/8	M22	3/4					31/12 4222	11623B	31/2 4222	11820B
1/8 NPT			19/11 4097	11609B	19/1 4097C	11810B				
1/4 NPT							31/12 4131C	11624B	31/2 4131C	11822B
3/8 NPT							31/12 4166C	11625B	31/2 4166C	11823B
1/2 NPT							31/12 4209C	11626B	31/2 4209C	11824B
1/2 NPT							31/12 4209C	11626B	31/2 4209C	11824B